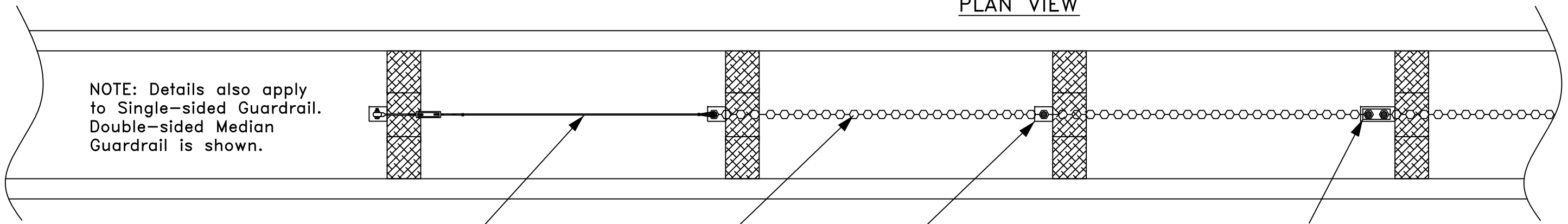


PLAN VIEW



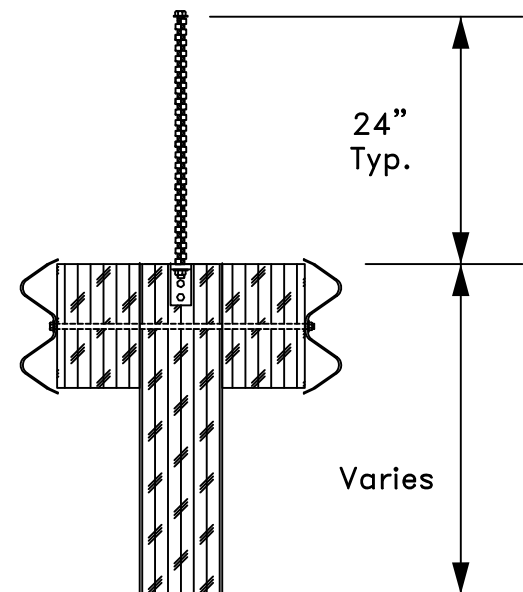
NOTE: Brackets may be placed on either side of Guardrail Post, as needed.

Cable Anchor/End Treatment Assembly, 1/4" Steel Cable, Typical.

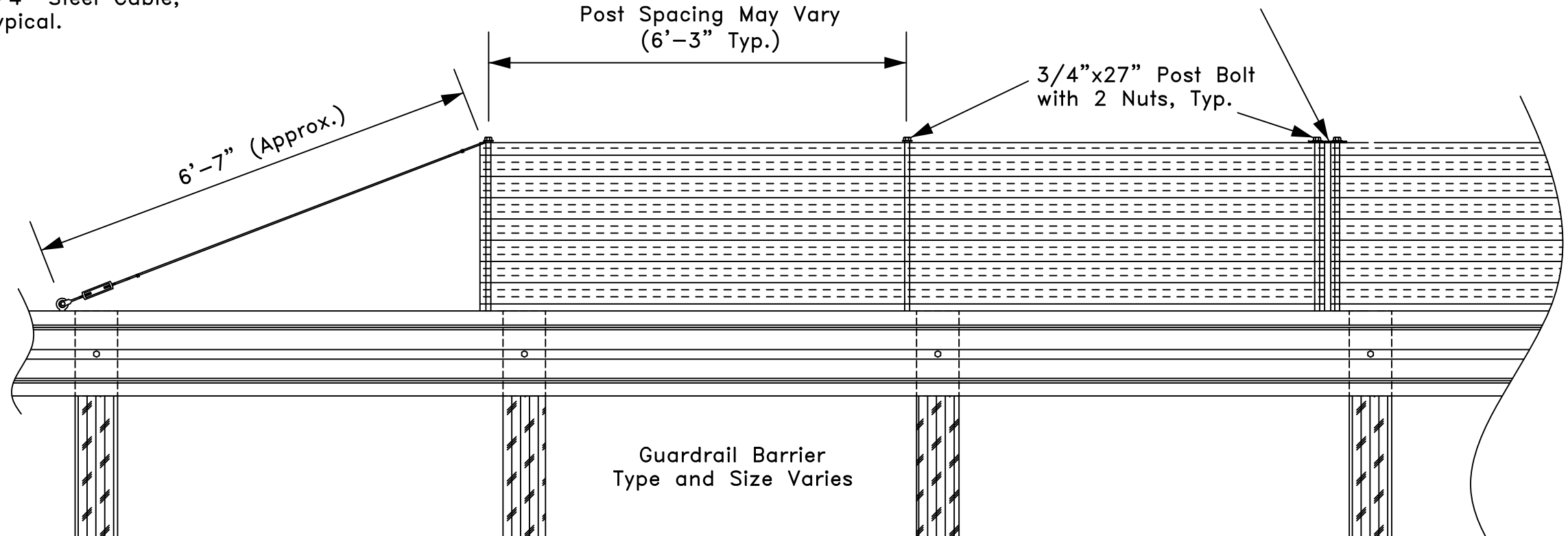
Screen/Barrier Fabric, Coated Double-Reverse Corrugated (DRC) Steel, Typical.

Single Post Bracket and Post Bolt at each Guardrail Post, Typical.

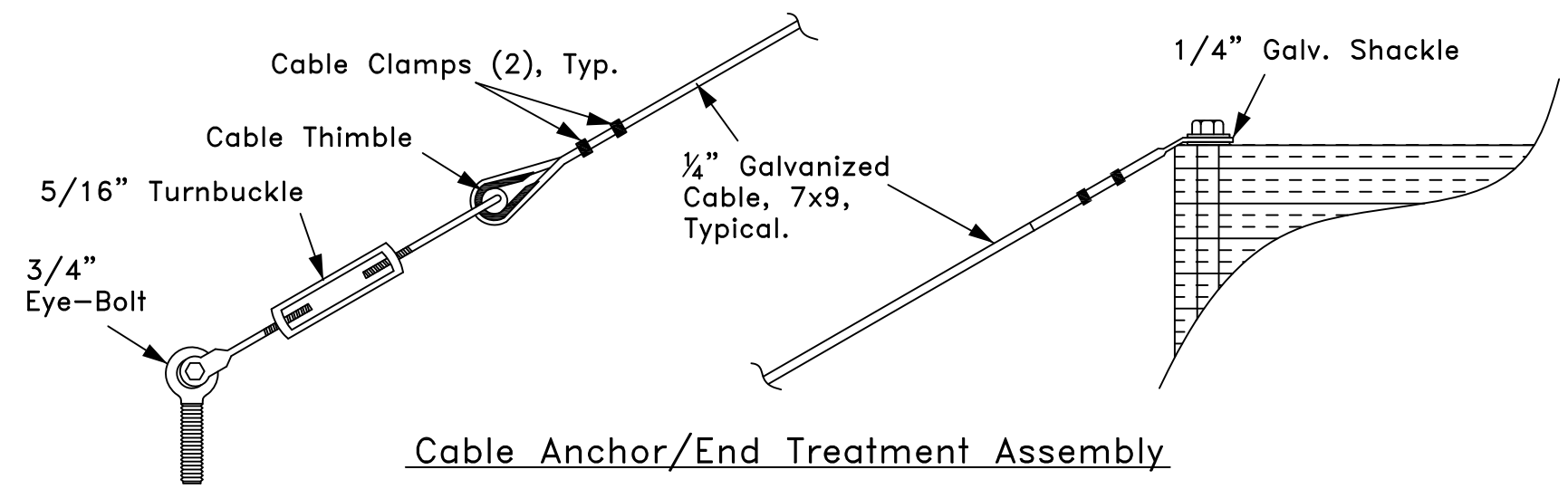
Screen Fabric Splice, Approx. every 50 ft, or as needed. Splice Bracket, Top Splice Plate & 2 Post Bolts, Typical.



SECTION VIEW



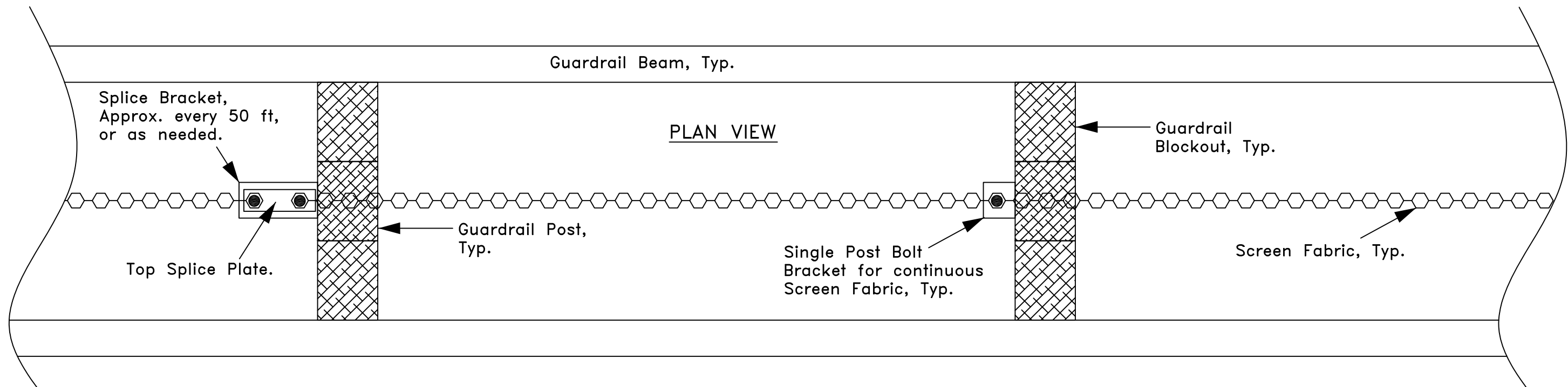
SIDE ELEVATION VIEW



Cable Anchor/End Treatment Assembly

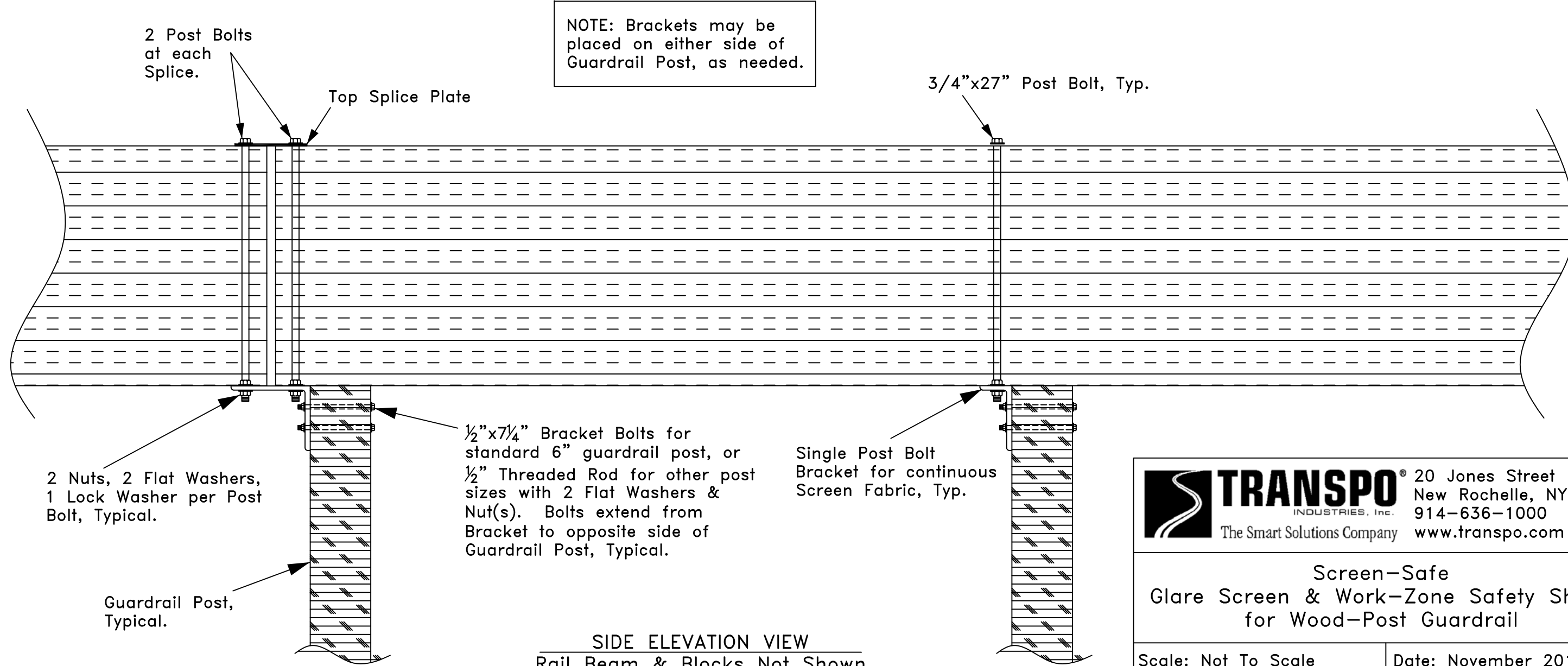
TRANSPO[®] 20 Jones Street
 New Rochelle, NY 10801
 INDUSTRIES, Inc. 914-636-1000
 The Smart Solutions Company www.transpo.com

Screen-Safe
 Glare Screen & Work-Zone Safety Shield
 for Wood-Post Guardrail



PLAN VIEW

NOTE: Brackets may be placed on either side of Guardrail Post, as needed.



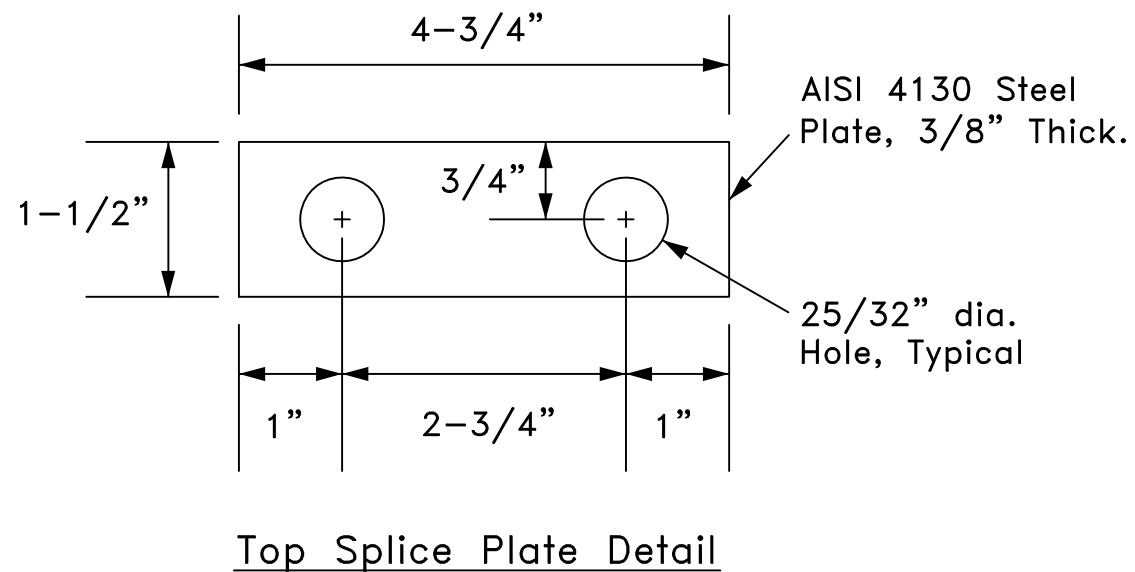
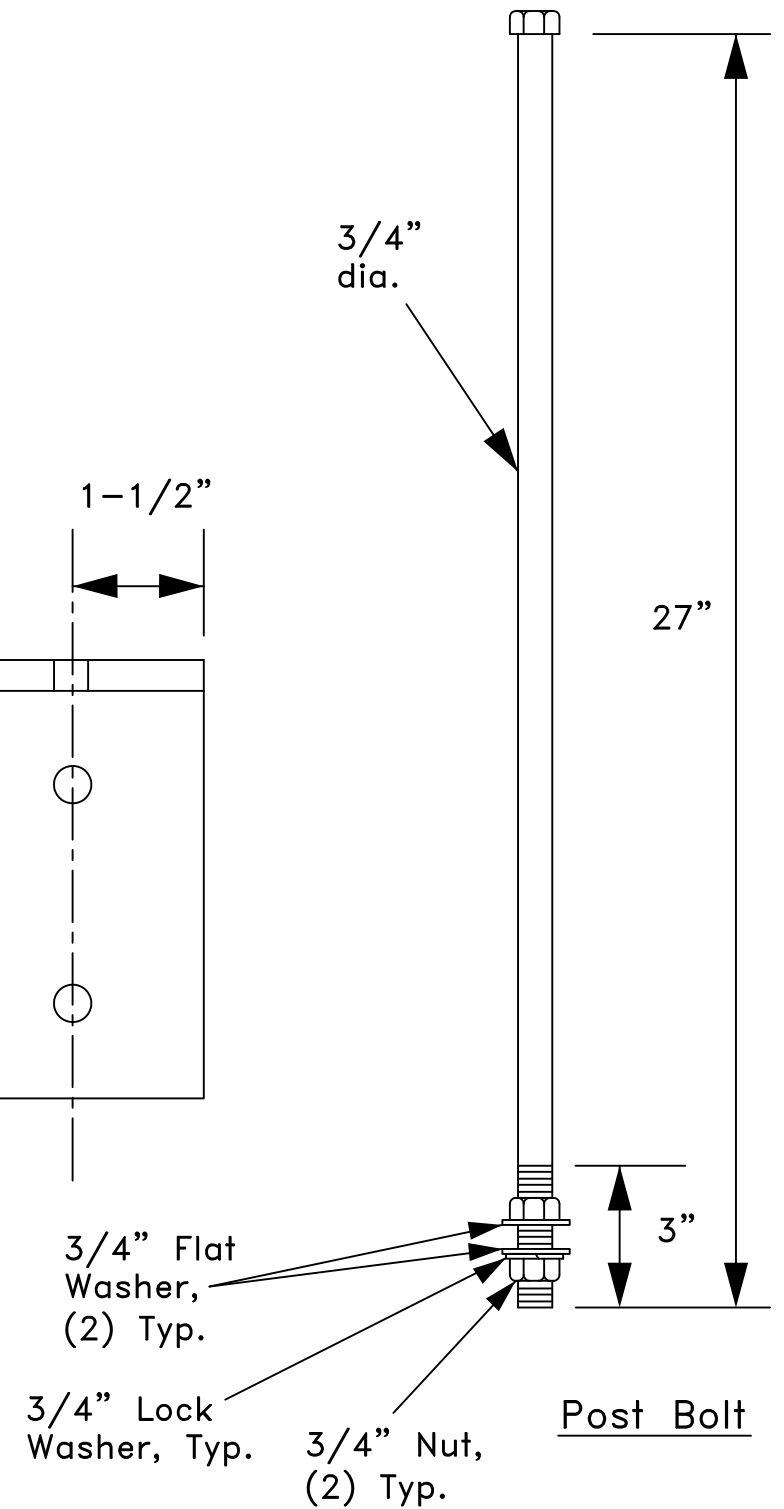
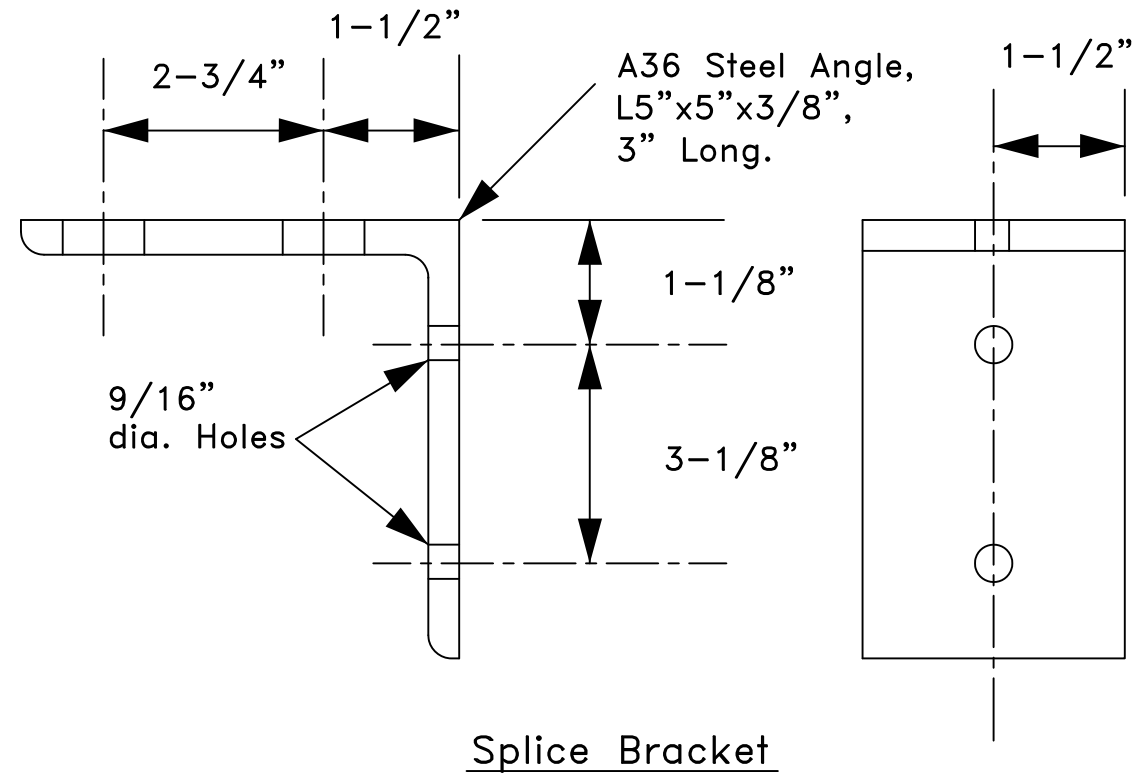
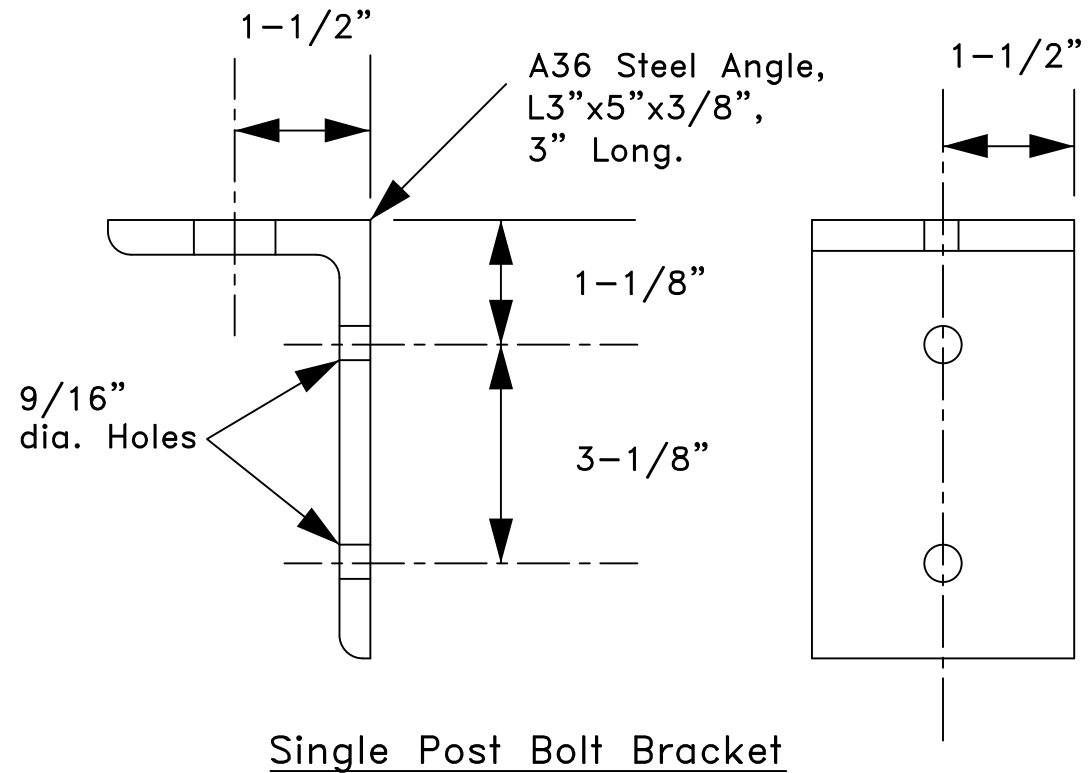
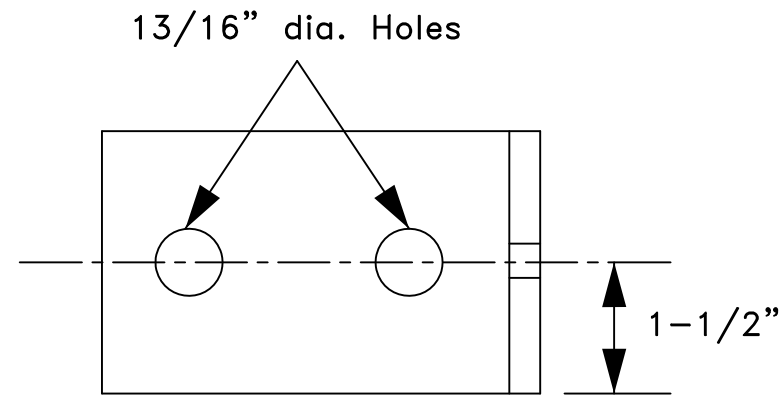
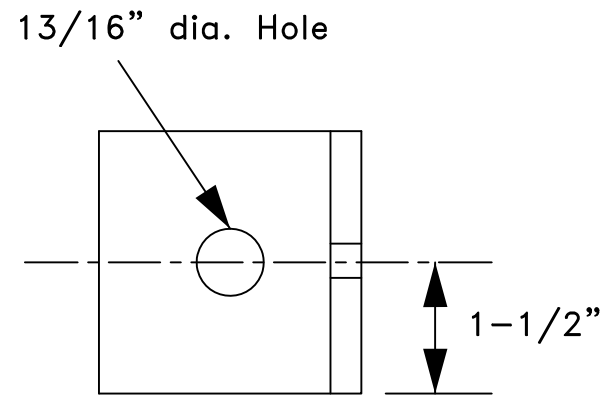
SIDE ELEVATION VIEW
Rail Beam & Blocks Not Shown

TRANSPO[®] 20 Jones Street
 INDUSTRIES, Inc. New Rochelle, NY 10801
 914-636-1000
 The Smart Solutions Company www.transpo.com

Screen-Safe
 Glare Screen & Work-Zone Safety Shield
 for Wood-Post Guardrail

Scale: Not To Scale Date: November 2011

Drawing No. SS-WPGR-2 Sheet: 2 of 3



TRANSPO® 20 Jones Street
 INDUSTRIES, Inc. New Rochelle, NY 10801
 914-636-1000
 The Smart Solutions Company www.transpo.com

Screen-Safe
 Glare Screen & Work-Zone Safety Shield
 for Guardrail, Component Details

Scale: Not To Scale Date: November 2011

Drawing No. SS-WPGR-3 Sheet: 3 of 3