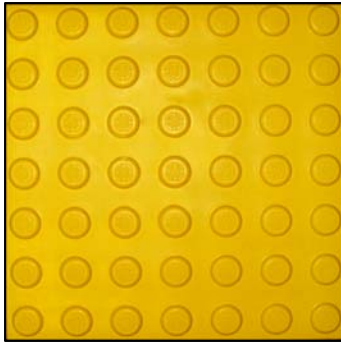


STEP-SAFE®

INSTALLATION INSTRUCTIONS



Step-Safe® comes in 300mm x 300 mm x 12mm (11.8" x 11.8" x .5") squares to install at 12" x 12" with gap for expansion, and is also available in 600mm x 600mm x 12mm (24" x 24") square size. Step-Safe® tiles can be custom cut to various radii using standard tile saws.

Step-Safe® tiles are available in a variety of standard colors including safety yellow, charcoal gray, forest green, bright white, chocolate brown and brick red. Custom colors are also available as per specific project requirement.

Installation in Freshly Poured Concrete

1. Pour new concrete and finish the surface using trowels as per project requirements. **Concrete must be wet to install Step-Safe®.**
2. Prior to setting Step-Safe®, remove approx. ½ inch of the fresh concrete in the area where tiles are to be set. This can be done with a hand trowel and will help reduce problems in forcing the tiles into the fresh concrete. **Make sure there are no hollow spots between the concrete and the back of Step-Safe®. Brushing water or cement paste on the back of the tiles before setting will increase the tile's bond to the concrete.**



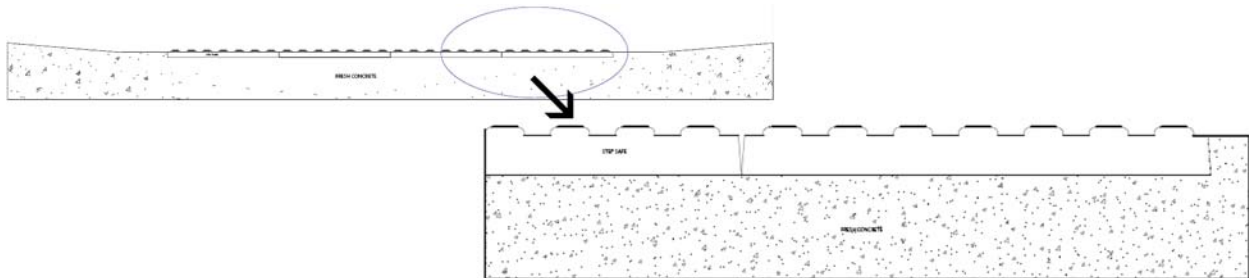
3. Place the Step-Safe® tiles into the freshly poured concrete, evenly in lines parallel to existing edge conditions, or as directed by the architect or engineers drawing. Leave a minimum 1/8" gap between adjacent tiles on all sides to accommodate expansion. Tiles should be pressed into the fresh wet concrete. The entire back surface of each tile must be in contact with the concrete **Avoid air pockets.** Take care to assure that the edges of the tile surface are not higher than the surrounding finished concrete surface; only the Truncated Domes should be above the finished concrete surface per ADA specifications. **Do not use hammers to install the tiles. Rubber mallets may be used to lightly tap.**

4. To assist in the proper installation and uniform elevation of tiles, if necessary, place a piece of plywood over the entire surface and add weight until the concrete has cured.
5. Allow concrete to cure before opening the surface to pedestrian traffic.

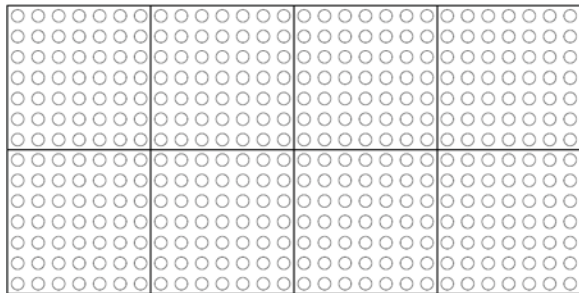


Installation on Existing Concrete Surfaces

1. All contact surfaces should be free of hydrostatic pressure, paint, membranes, oils, curing compounds or any other material, which could impede tile/grout adhesion. Concrete surface must be at least 28 days old. Surfaces must be even, free of projections and in sound condition.
2. Remove the concrete in the area where the Step-Safe® tiles are to be installed. This can be done with grinders, mills or light chipping hammers. The depth of the removal should be equal to the thickness of the Step-Safe® tile (½ inch) plus the thickness of the tile setting/bonding grout.



3. Use an exterior latex-based tile mortar or one recommended in the project specifications. Follow setting/bonding grout manufacturer's recommendations and instructions for mixing and application. Apply the specified setting/bonding material to the concrete surface, maintaining uniform thickness to assure proper tile elevation with surrounding concrete surfaces.



4. Place the Step-Safe® tiles evenly in lines parallel to existing edge conditions or as directed by the architect or engineers drawing. Leave a minimum 1/8" gap between adjacent tiles on all sides to accommodate expansion. Tiles should be pressed into the setting/bonding grout taking care to assure that the edges of the tile surface is not higher than the surrounding concrete surface; only the truncated domes should be above the concrete surface as per ADA specifications. **Do not use hammers.**

5. To assist in the proper installation and uniform elevation of tiles, if necessary, place a piece of plywood over the entire tile surface and add weight until the setting/bonding grout has cured.
6. Allow the setting/bonding grout to cure before opening to traffic.

Note: Alternatively, retrofit applications can also be installed by cutting a 2' x 4' full-depth section of the existing concrete ramp (where ADA tiles would be installed) and pouring/placing new concrete with Step-Safe® tiles.



20 Jones Street, New Rochelle, NY 10801
Tel: 914-636-1000 Fax: 914-636-1282
Web: www.transpo.com
Email: info@transpo.com 12/09

