

## *Stormwater Sediment Control Sack for Construction Projects*



The EnviroSafe<sup>™</sup> Stormwater Sediment Control Sack (ESSCS) system is designed to capture and retain the many pollutants associated with storm water run-off from construction activity. As the point of entry into a local conveyance for stormwater, the ESSCS system effectively captures debris, trash, sediment and oils.

The ESSCS system is a valuable tool as a stand alone or pre-treatment best management practice (BMP) in meeting your soil erosion and sediment control objectives. The ESSCS system can be retrofitted to fit flat-grated and combination curb-grated catch basins.

After many years of development (using FABCO<sup>®</sup> technology), the ESSCS system is highly adaptable to a wide range of grate sizes. The sack portion provides ample storage for debris and sediment (over 7 cubic feet in the 28 x 44" size). The optional geotextile based liner can retain up to 1.3 gallons of oil.

### *Features and Advantages*

- Large storage capacity traps oil, sediment and debris
- Adjustable metal alloy mounting frame
- Liner manufactured from a patented, lightweight, recycled polymeric absorbent material
- Eight years of development in the industrial wastewater field
- High filtered flow rates
- Ideal as part of a BMP program to meet NPDES II



## STORMWATER SEDIMENT CONTROL

### Grate width 21-24"

Grate Length	Part #	Sack Size	Oil Capacity with Liner	Filtered Flow Rate	Bypass Flow Rate	Debris Capacity
27-31"	SEVSX486	18"x24"	0.57gal.	808gpm	300gpm	2.2 cubic ft
32-35"	SEVSX485	18"x28"	0.65gal.	918gpm	300gpm	2.6 cubic ft
36-38"	SEVSX484	18"x32"	0.73gal.	1029gpm	338gpm	3.0 cubic ft
39-43"	SEVSX483	18"x36"	0.80gal.	1135gpm	338gpm	3.4 cubic ft
44-47"	SEVSX482	18"x40"	0.88gal.	1245gpm	376gpm	3.8 cubic ft
48-52"	SEVSX481	18"x44"	0.96gal.	1353gpm	376gpm	4.2 cubic ft

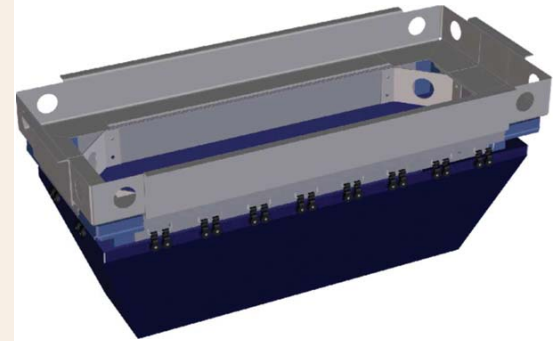
### Grate width 25-30"

Grate Length	Part #	Sack Size	Oil Capacity with Liner	Filtered Flow Rate	Bypass Flow Rate	Debris Capacity
27-31"	SEVSX496	22"x24"	0.66gal.	937gpm	300gpm	2.8 cubic ft
32-35"	SEVSX495	22"x28"	0.75gal.	1059gpm	300gpm	3.3 cubic ft
36-38"	SEVSX494	22"x32"	0.84gal.	1182gpm	338gpm	3.9 cubic ft
39-43"	SEVSX493	22"x36"	0.92gal.	1302gpm	338gpm	4.4 cubic ft
44-47"	SEVSX492	22"x40"	1.0gal.	1422gpm	376gpm	4.9 cubic ft
48-52"	SEVSX491	22"x44"	1.1gal.	1540gpm	376gpm	5.5 cubic ft

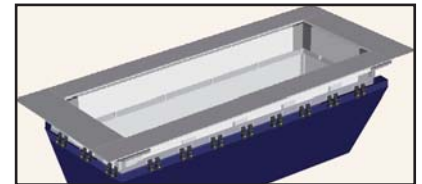
### Grate width 31-36"

Grate Length	Part #	Sack Size	Oil Capacity with Liner	Filtered Flow Rate	Bypass Flow Rate	Debris Capacity
39-43"	SEVSX503	28"x36"	1.1gal.	1548gpm	451gpm	5.8 cubic ft
44-47"	SEVSX502	28"x40"	1.2gal.	1688gpm	489gpm	6.6 cubic ft
48-52"	SEVSX501	28"x44"	1.3gal.	1828gpm	489gpm	7.3 cubic ft

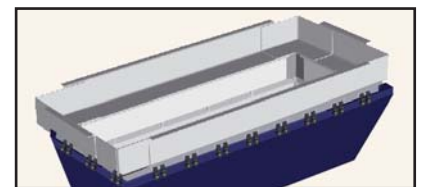
For ordering purposes, just add correct dash identifier for desired mounting flange type to P/N (e.g. SEVSX483 rectangular basin with a deep adjustable flange becomes: SEVSVB303-F3). Consult factory for custom designs.



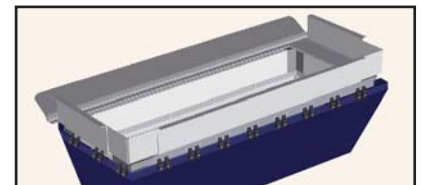
## FLANGES



**F5 (Flat Adjustable)** Designed for drop inlets with flat grate covers. Offers adjustment of up to 4" when installing in catch basin.



**F3 (Deep Adjustable)** Designed for drop inlets with grate covers that are not flat on the underside. Similar adjustment to the flat flange.



**F5 (Deep Adjustable/Open Curb)** Designed for combo drop/open curb inlets. Rear deflector redirects flow that enters along curb into the stormwater sack.