

SPECIFICATIONS

Physical Properties:

1. Ultimate Tensile Load = 267 kN (60.0 kips) minimum per Anchor.
2. Actual Pullout Strength depends on foundation design and concrete properties.

Installation Instructions:

See other side of page for typical installation diagrams.

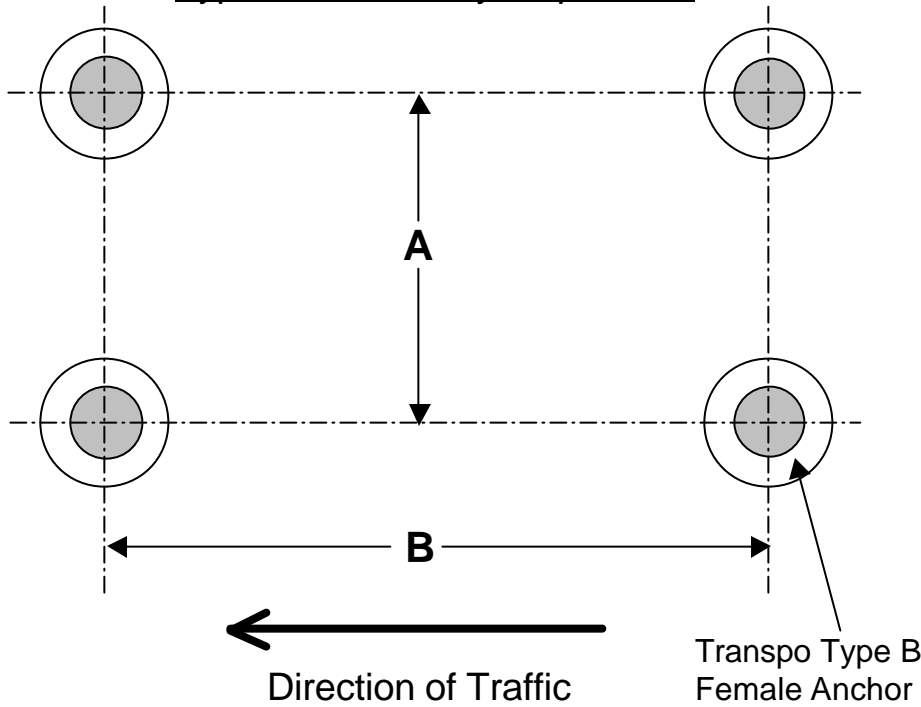
1. Fabricate flat steel or wood template with four (4) 25 mm (1") diameter holes located to match the specified bolt pattern of the Break-Safe brackets attached to the signpost.
2. Attach four (4) Break-Safe® Type B Female Anchors to template using four (4) 25 mm (1") diameter bolts. Ensure that each Anchor Washer is flush and snug against the bottom of the template.
3. Lower Anchor Assembly into fresh concrete foundation, and vibrate into position such that the tops of the Anchor Washers are flush with the finished top surface of the foundation.
4. Support template such that all Anchors are level and in their proper locations.
5. Allow concrete to cure, and then remove bolts and template from the top of the foundation.

Transpo® Type B Female Anchor
for use with Break-Safe® Type B
Breakaway Support System for Sign Posts

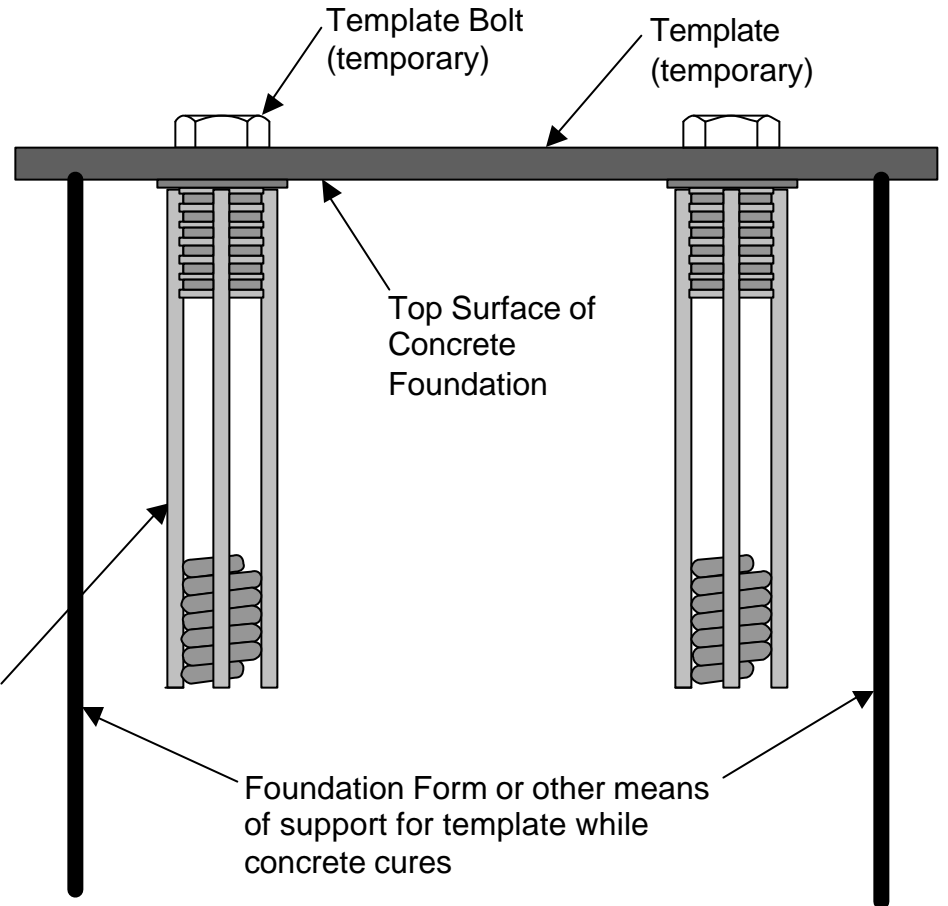


20 Jones Street
New Rochelle, NY 10801
914-636-1000

Typical Anchor Layout per Post



Transpo Type B Female Anchor (Typical, 4 per Foundation)



Break-Safe Model B525

- A = 76 mm (3")
- B (Bracket No. 1) = Depth of Post Section + 202 mm (7-15/16")
- B (Bracket No. 2) = Depth of Post Section + 205 mm (8-1/16")
- B (Bracket No. 3) = Depth of Post Section + 206 mm (8-1/8")

Break-Safe Model B650

- A = 102 mm (4")
- B (Bracket No. 1) = Depth of Post Section + 202 mm (7-15/16")
- B (Bracket No. 2) = Depth of Post Section + 205 mm (8-1/16")
- B (Bracket No. 3) = Depth of Post Section + 206 mm (8-1/8")

See other side of page for complete Installation Instructions

6/00

Transpo® Type B Female Anchor
for use with Break-Safe® Type B
Breakaway Support System for Sign Posts



20 Jones Street
New Rochelle, NY 10801
914-636-1000